

lakeland

FARM & RANCH DIRECT

PRODUCT ASSEMBLY MANUAL



6FT PUSH & DRIVE-OVER GATE



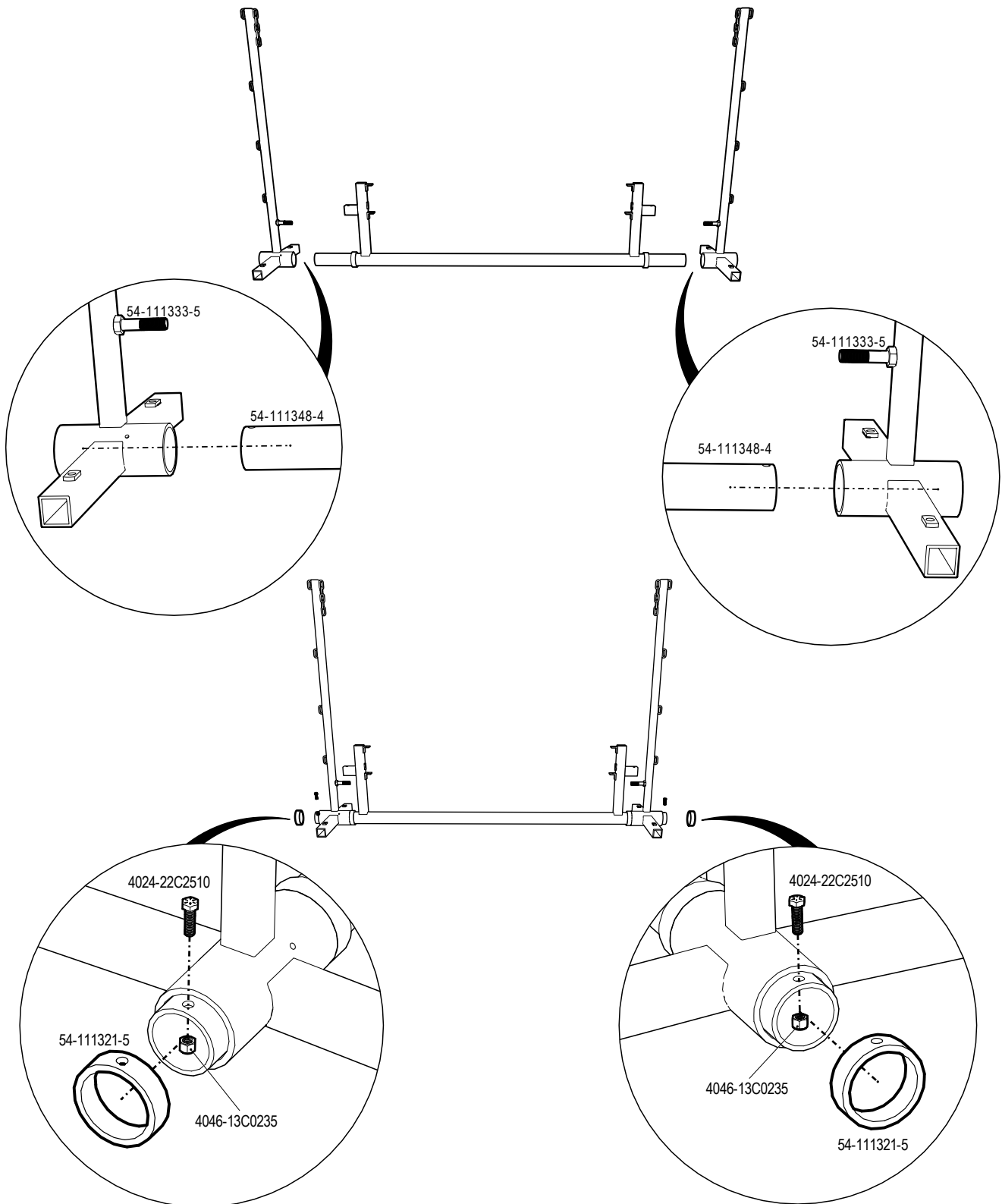
Premium Products, Premium Service...Direct to Your Door!

Canada Office: Box 1310, 1 Limestone Drive, Stonewall, Manitoba, Canada, R0C 2Z0

US Office: 2700 Alliance Drive, Waterford, MI 48328

Ph: (204) 467-4470 | Tf: 1-866-443-7444

LakelandFarmandRanch.com

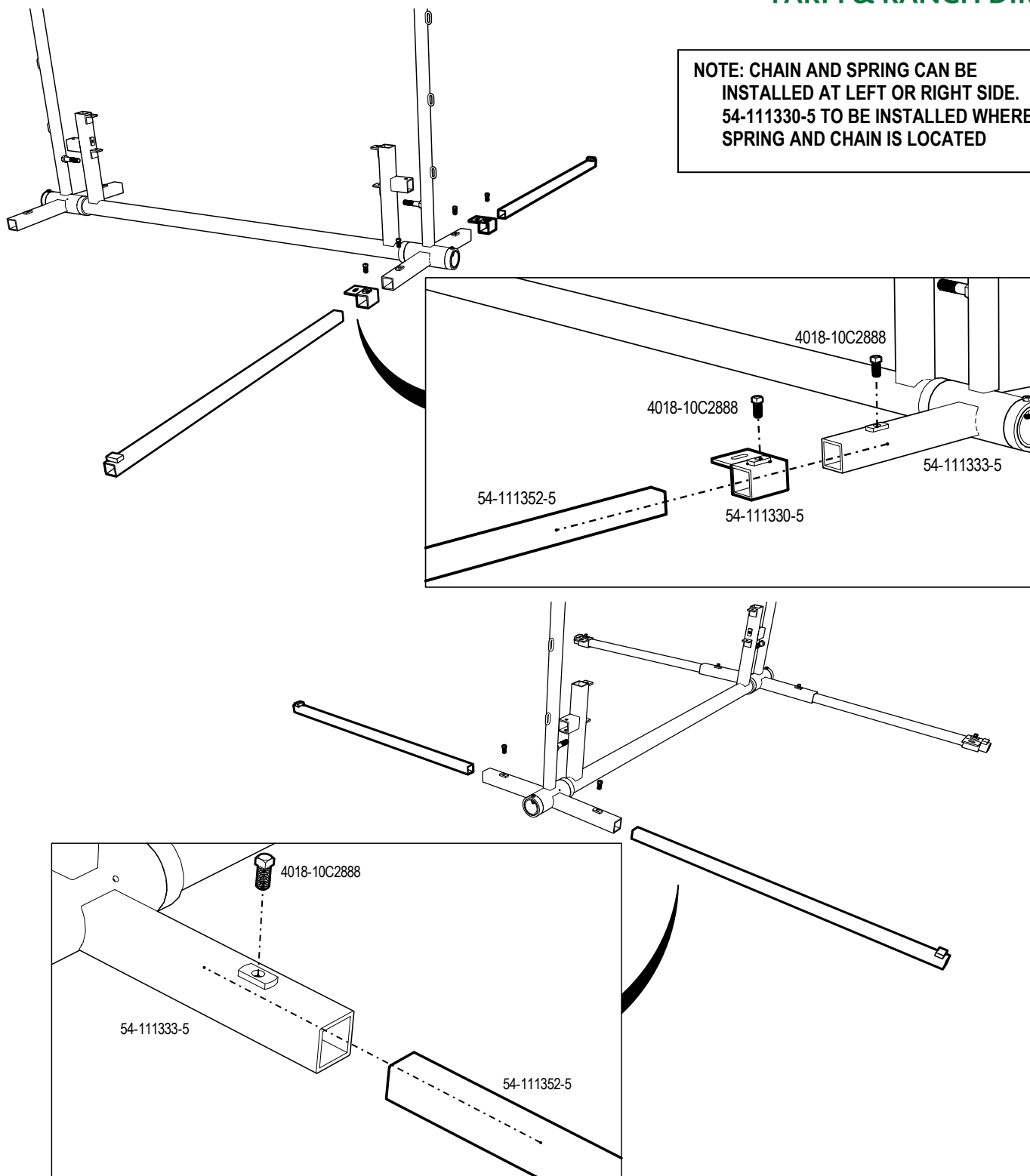


Premium Products, Premium Service...Direct to Your Door!

lakeland

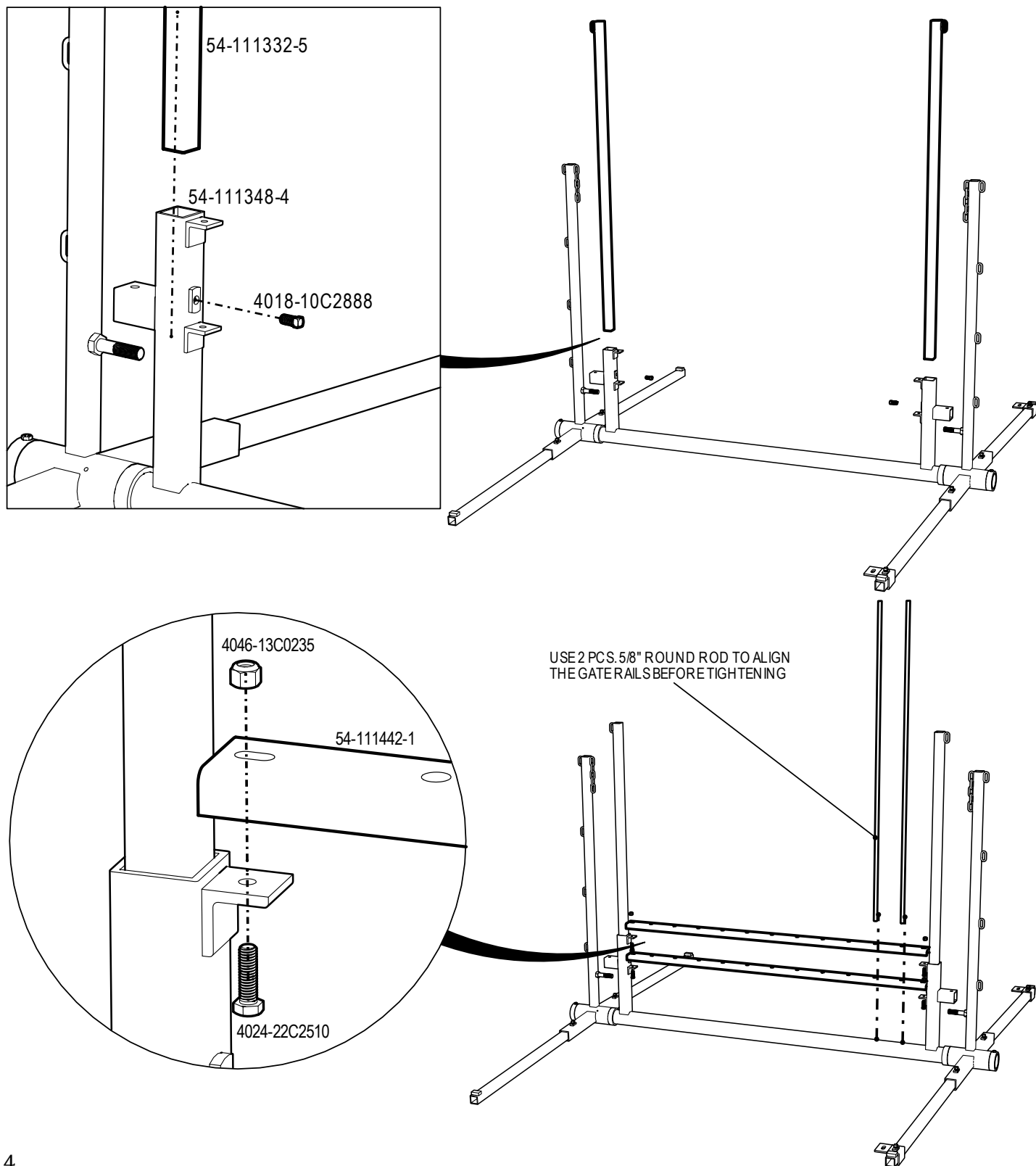
FARM & RANCH DIRECT

NOTE: CHAIN AND SPRING CAN BE
INSTALLED AT LEFT OR RIGHT SIDE.
54-111330-5 TO BE INSTALLED WHERE
SPRING AND CHAIN IS LOCATED



NEED HELP?

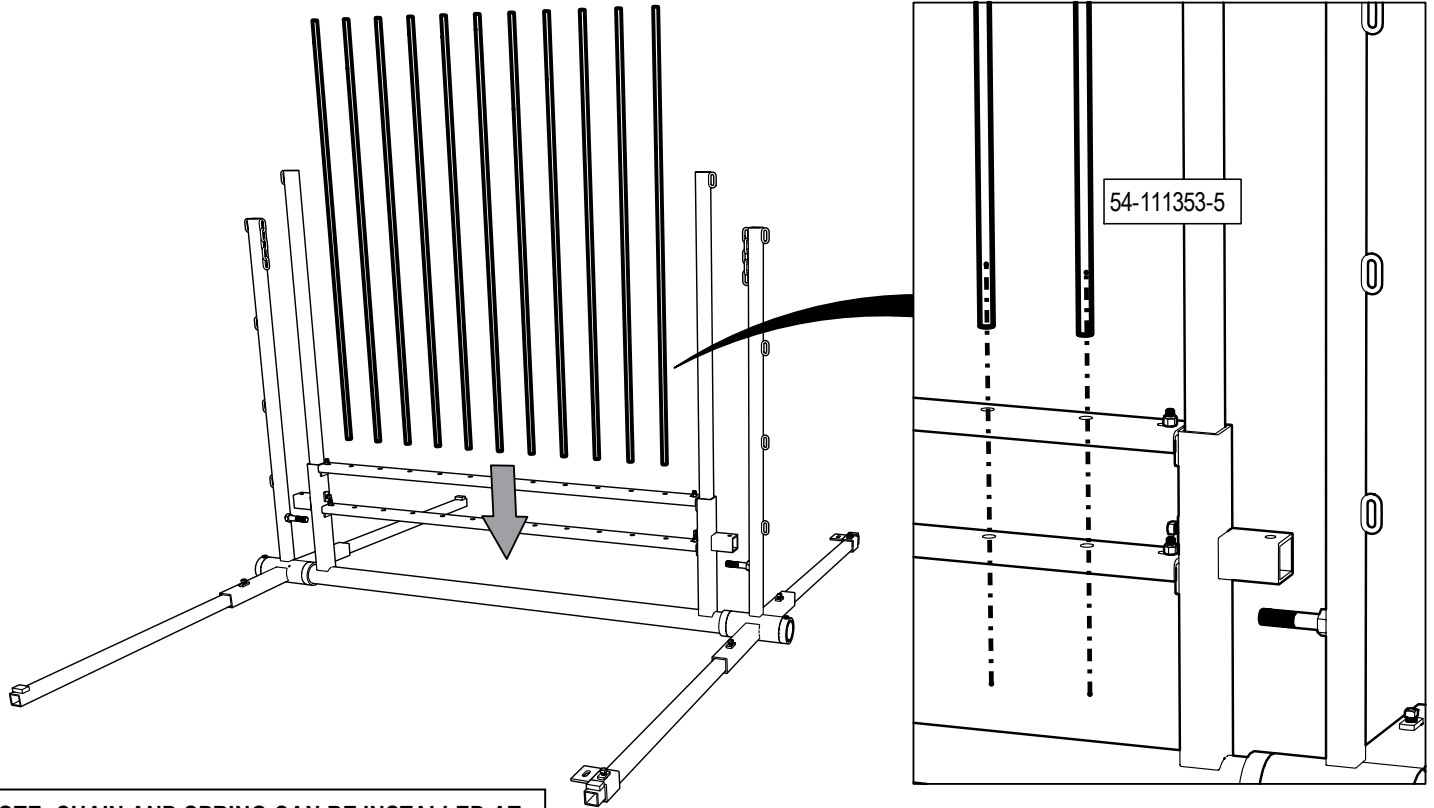
Call or Text us at..
Tf: 1-866-443-7444
LakelandFarmandRanch.com



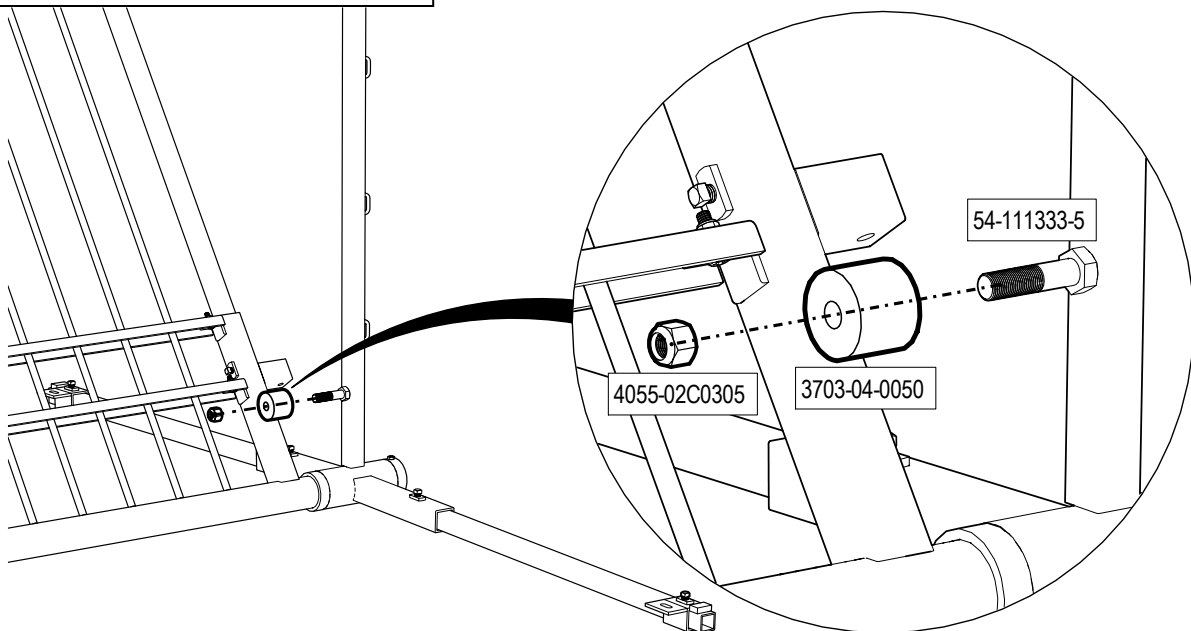
Premium Products, Premium Service...Direct to Your Door!

lakeland

FARM & RANCH DIRECT

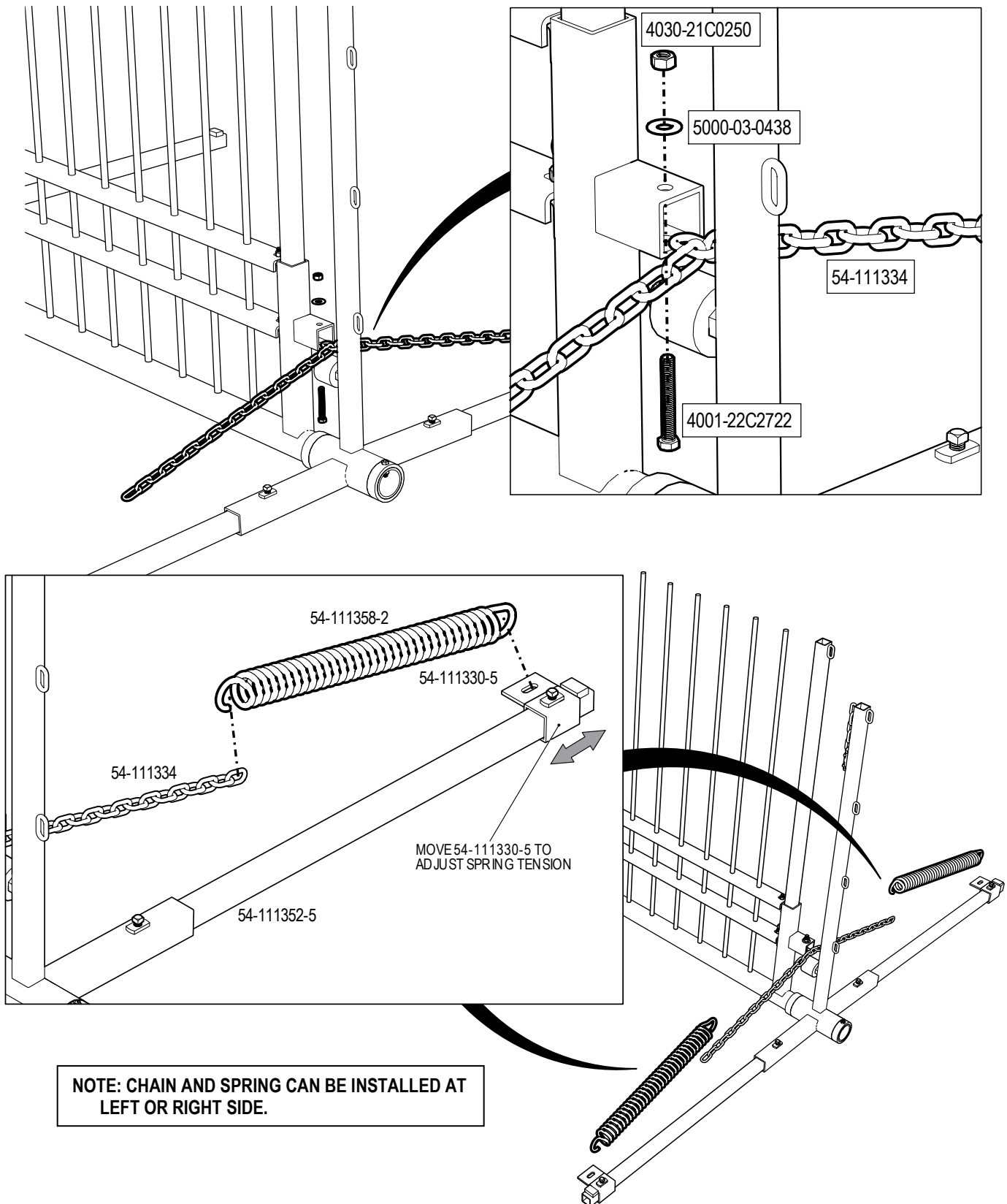


NOTE: CHAIN AND SPRING CAN BE INSTALLED AT LEFT OR RIGHT SIDE. ROLLER TO BE INSTALLED WHERE SPRING AND CHAIN IS LOCATED



NEED HELP?

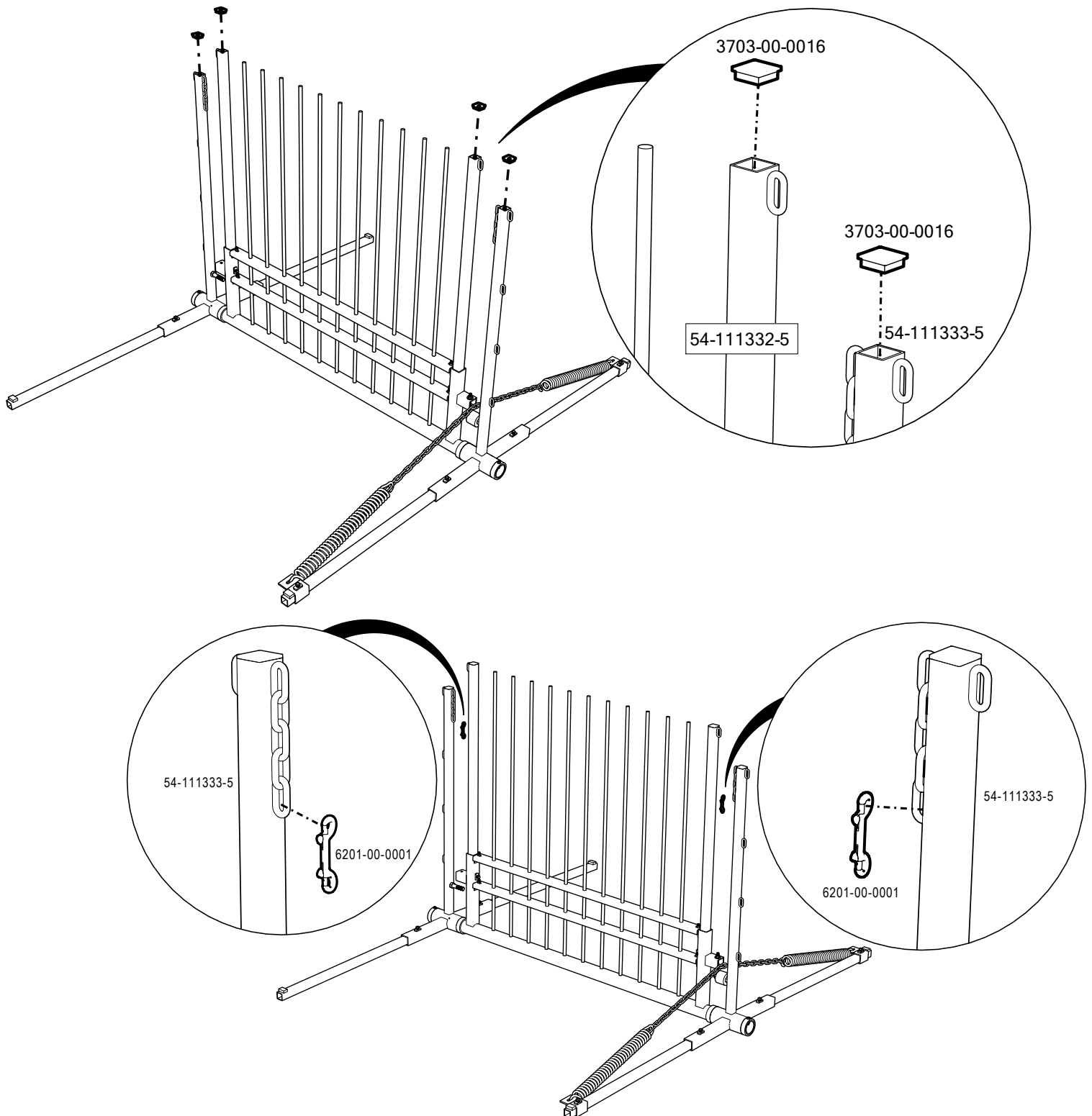
Call or Text us at..
Tf: 1-866-443-7444
LakelandFarmandRanch.com



Premium Products, Premium Service...Direct to Your Door!

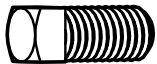
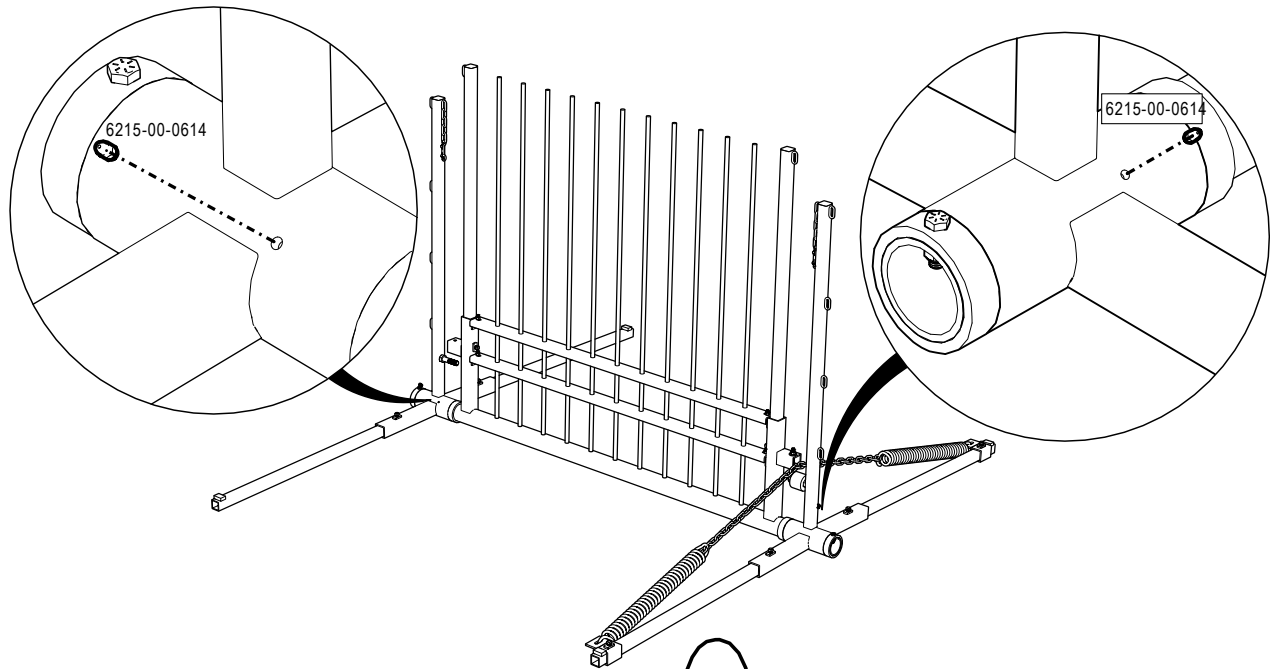
lakeland

FARM & RANCH DIRECT

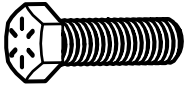


NEED HELP?

Call or Text us at..
Tf: 1-866-443-7444
LakelandFarmandRanch.com



4018-10C2888 - SETSCR-SQ HD 1/2 x 1



4024-22C2510 - BOLT-WHIZ 3/8 x 1 1/4 UNC GR.5



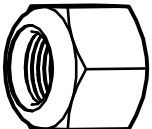
4001-22C2722 - BLT-HX 7/16 x 3 GR.5



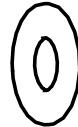
4046-13C0235 - NUT-WHIZ FLG 3/8 UNC GR.5



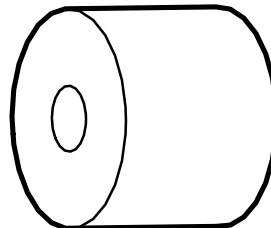
4030-21C0250 - NUT-HEX 7/16 UNC PLTD GR.5



4055-02C0305 NUT-LOCK UNI-TRQ - 3/4" UNC



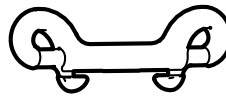
5000-03-0438 - WASHER-LOCK 7/16 DIA. PTD.



3703-04-0050 - UHMW WHEEL - Ø 2 1/2" x 2" WHITE



54-11358-2 - ASSIST SPRING 6'



6201-00-0001 - BOLT SNAP - PLTD STEEL



6215-00-0614 - GREASE ZERK - 1/4"-28 STR.